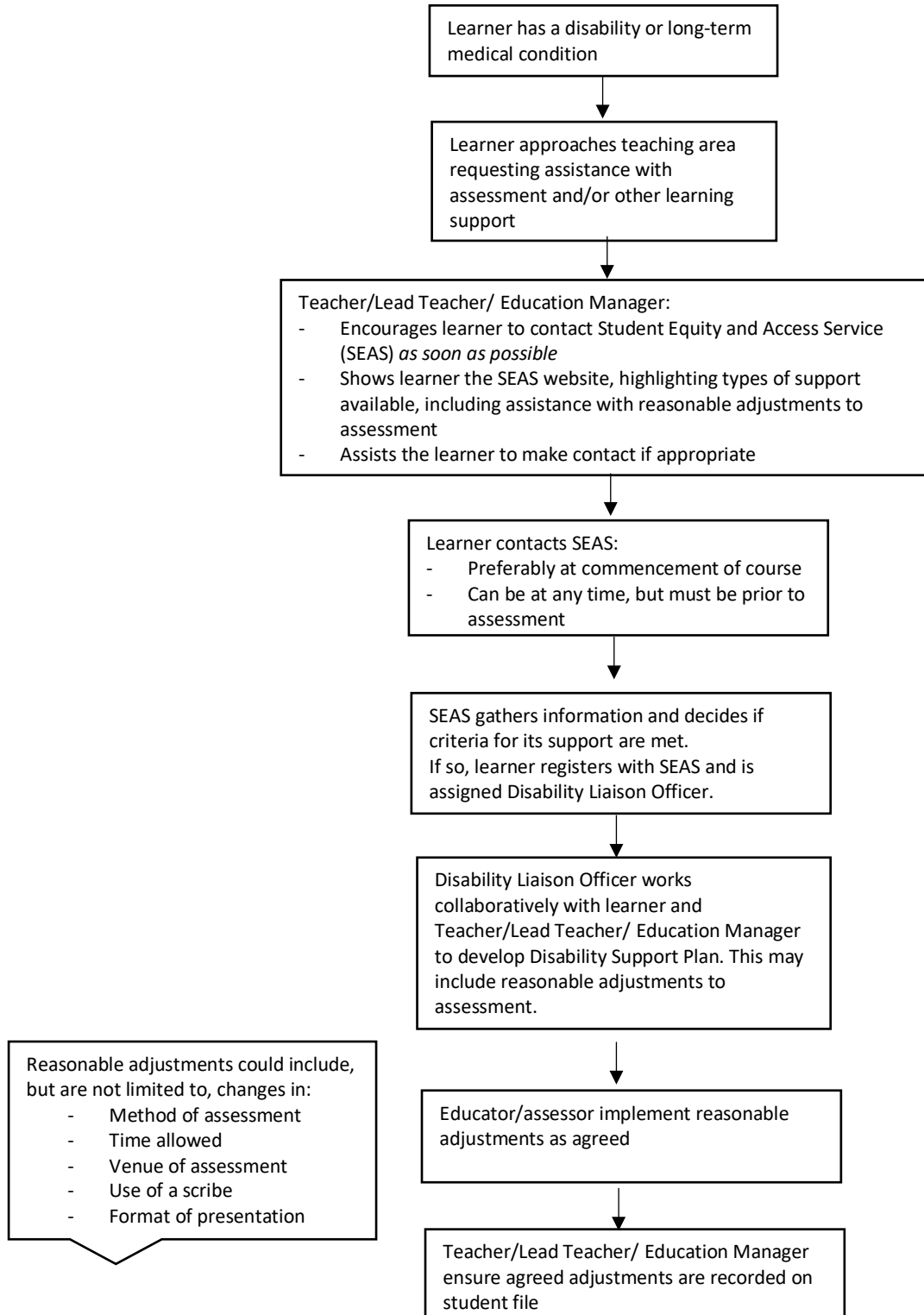


Assessment (VET and Foundation) Procedure

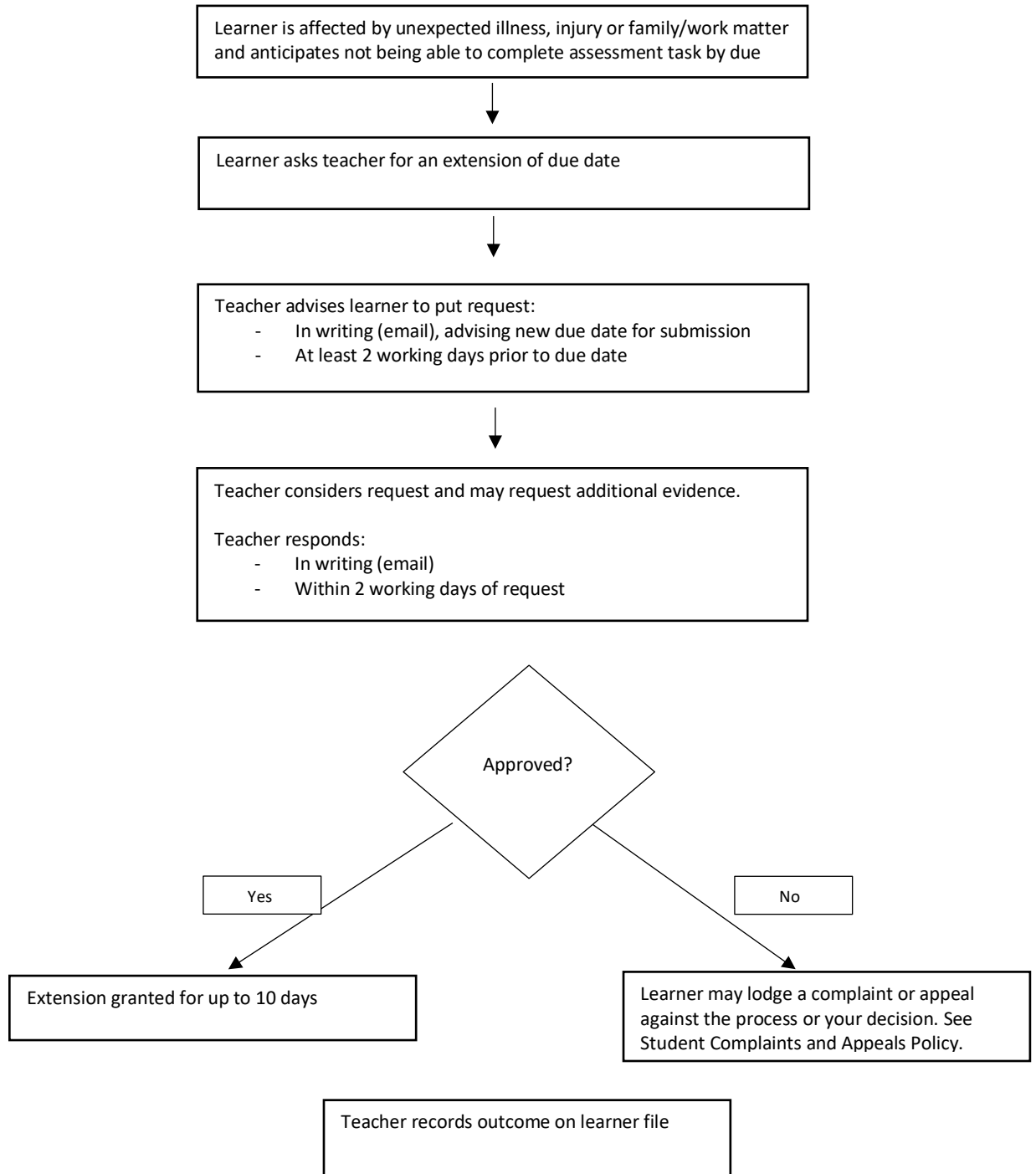
Appendix A – Handling requests for alternative arrangements for assessment

Flowchart 1: Reasonable adjustments for learners with a disability or long-term medical condition



Assessment (VET and Foundation) Procedure

Flowchart 2: Extension to due date (less than 10 days)



Assessment (VET and Foundation) Procedure

Flowchart 3: Special consideration

- A learner's personal circumstances, illness, injury or other cause are anticipated to adversely affect their capacity to prepare for, present or perform any component of an assessment; and/or
- A learner anticipates their ability to complete assessment will be impacted by personal circumstances including illness, injury or other cause for a period of more than 10 days; and/or
- A learner's performance on an assessment was adversely affected by personal circumstances, illness injury or other cause. This includes learners with a disability who may have been impacted by unforeseen circumstances not covered under their Disability Support Plan.

